

# Seko AKL and APG Series



## SEKO Tekna Series Pump Features

- 5 Models cover an output range of 2-696 GPD with pressure ratings up to 290 PSI.
- Turndown ratio 100:1 using the manual stroke rate control.
- Installation flexibility with both wall mount and surface mount brackets included.
- Wet end constructed of PVDF Head, PVDF Fittings, Ceramic Balls, FPM Seats and a long life, 1 piece, molded PTFE diaphragm.
- Pump head incorporates an integral manual priming valve.
- Automatic degassing wet end available with PVDF Head & Fittings, Ceramic ball checks, FPM seats and molded Teflon Diaphragm.
- Installation kit included with Foot Valve/Strainer, Injection/Back Pressure Valve, 3/8" PVC Suction and Polyethylene Discharge tubing.
- Liquid End, User Interface and Wiring are all on the same end of the pump to simplify installation, operation, and maintenance.
- Chemical resistant, glass reinforced polypropylene enclosure is IP65 and NEMA 4x rated.
- Auto ranging power supply. 100-240VAC, 50/60Hz.
- Dry contact low level input with alarm LED.

## AKL Series

- On/Off Switch
- Adjustable output via stroke frequency
- Dual strokes per minute scales for improved low flow resolution
- Power on LED indicator

## APG Series

- Offers multiple switch selectable control options
- Manual speed control
- Proportional feed control via;
  - 4-20mA signal
  - Digital pulse input (dry contact water meter) with pulse multiply/divide options



# Seko AKL and APG Series

## Tekna AKL Series, Degassing Head Assembly, PVDF/TFE/FPM/Ceramic

Model #	SPM (Max)	GPD	PSI	GPD	PSI	GPD	PSI	GPD	PSI
AKL603NAH0U00	160	25	174	32	145	38	116	51	29
AKL800NAH0U00	300	44	232	63	145	95	72	114	14

## Tekna AKL Series, PVDF/TFE/FPM/Ceramic

Model #	SPM (Max)	GPD	PSI	GPD	PSI	GPD	PSI	GPD	PSI
AKL500NHH0U00U	120	2	290	5	232	8	145	10	87
AKL600NHH0U00U	120	15	290	19	260	26	200	44	120
AKL603NHH0U00U	160	25	174	32	145	38	116	51	29
AKL800NHH0U00U	300	44	232	63	145	95	72	114	14
AKL803NHH0U00U	300	127	72	203	58	394	29	696	0

## Tekna AKL Series, PVDF/EPDM/Ceramic

Model #	SPM (Max)	GPD	PSI	GPD	PSI	GPD	PSI	GPD	PSI
AKL500NHH1U00U	120	2	290	5	232	8	145	10	87
AKL600NHH1U00U	120	15	290	19	260	26	200	44	120
AKL603NHH1U00U	160	25	174	32	145	38	116	51	29
AKL800NHH1U00U	300	44	232	63	145	95	72	114	14
AKL803NHH1U00U	300	127	72	203	58	394	29	696	0

## Tekna APG Series, PVDF/TFE/FPM/Ceramic

Model #	SPM (Max)	GPD	PSI	GPD	PSI	GPD	PSI	GPD	PSI
APG603NHH0U00U	160	25	174	32	145	38	116	51	29
APG800NHH0U00U	300	44	232	63	145	95	72	114	14
APG803NHH0U00U	300	127	72	203	58	394	29	696	0

## Tekna APG Series, PVDF/TFE/EPDM/Ceramic

Model #	SPM (Max)	GPD	PSI	GPD	PSI	GPD	PSI	GPD	PSI
APG603NHH1U00U	160	25	174	32	145	38	116	51	29
APG800NHH1U00U	300	44	232	63	145	95	72	114	14
APG803NHH1U00U	300	127	72	203	58	394	29	696	0



Quantrol Inc. 9001 Hanslik Court, Naperville, IL 60564  
 Phone: (630) 355-3330 Email: info@quantrol.net Web: www.quantrol.net



# Seko TPG and TPR Series



## SEKO Tekna Series Pump Features

- 4 Models cover an output range of 2-696 GPD with pressure ratings up to 290 PSI.
- Turndown ratio 100:1 using the manual stroke rate control.
- Installation flexibility with both wall mount and surface mount brackets included.
- Wet end constructed of PVDF Head, PVDF Fittings, Ceramic Balls, FPM Seats and a long life, 1 piece, molded PTFE diaphragm.
- Pump head incorporates an integral manual priming valve.
- Automatic degassing wet end available with PVDF Head & Fittings, Ceramic ball checks, FPM seats and molded Teflon Diaphragm.
- Installation kit included with Foot Valve/Strainer, Injection/Back Pressure Valve, 3/8" PVC Suction and Polyethylene Discharge tubing.
- Liquid End, User Interface and Wiring are all on the same end of the pump to simplify installation, operation, and maintenance.
- Chemical resistant, glass reinforced polypropylene enclosure is IP65 and NEMA 4x rated.
- Auto ranging power supply. 100-240VAC, 50/60Hz.
- Dry contact low level input with alarm LED.

## TPR Digital Series

- Built in pH or ORP control
- Proportional control, overfeed and alarm setting
- Alarm dry contact output
- Alarm and stroke LED indicators
- Remote Start/Stop input
- 4-20mA output

## TPG Digital Series

- Intuitive user interface with 6 button keypad and LCD display.
- Start/Stop button.
- Alarm and stroke LED indicators.
- User selectable operating modes include:
  - Manual
  - 4-20mA
  - 20-4mA
  - PPM Feed
  - Pulse Divide/Multiply
  - Batch
  - Timer
- Remote Start/Stop Input.
- Alarm Dry Contact output.
- 9 languages including English and Spanish.



# Seko TPG and TPR Series

## Tekna Digital TPG Series, Degassing Head Assembly, PVDF/TFE/FPM/Ceramic

Model #	SPM (Max)	GPD	PSI	GPD	PSI	GPD	PSI	GPD	PSI
TPG603NAH0U00	160	25	174	32	145	38	116	51	29
TPG800NAH0U00	300	44	232	63	145	95	72	114	14

## Tekna Digital TPG Series, PVDF/TFE/FPM/Ceramic

Model #	SPM (Max)	GPD	PSI	GPD	PSI	GPD	PSI	GPD	PSI
TPG500NHH0U00U	120	2	290	5	232	8	145	10	87
TPG603NHH0U00U	160	25	174	32	145	38	116	51	29
TPG800NHH0U00U	300	44	232	63	145	95	72	114	14
TPG803NHH0U00U	300	127	72	203	58	394	29	696	0

## Tekna TPG Series, PVDF/TFE/EPDM/Ceramic

Model #	SPM (Max)	GPD	PSI	GPD	PSI	GPD	PSI	GPD	PSI
TPG500NHH1U00U	120	2	290	5	232	8	145	10	87
TPG603NHH1U00U	160	25	174	32	145	38	116	51	29
TPG800NHH1U00U	300	44	232	63	145	95	72	114	14
TPG803NHH1U00U	300	127	72	203	58	394	29	696	0

## Tekna TPR Series, pH or ORP Control Capable, PVDF/TFE/FPM/Ceramic

\*Probes sold separately\*

Model #	SPM (Max)	GPD	PSI	GPD	PSI	GPD	PSI	GPD	PSI
TPR603NHH0U00U	160	25	174	32	145	38	116	51	29
TPR800NHH0U00U	300	44	232	63	145	95	72	114	14

## Tekna TPR Series, pH or ORP Control Capable, PVDF/TFE/EPDM/Ceramic

\*Probes sold separately\*

Model #	SPM (Max)	GPD	PSI	GPD	PSI	GPD	PSI	GPD	PSI
TPR603NHH1U00U	160	25	174	32	145	38	116	51	29
TPR800NHH1U00U	300	44	232	63	145	95	72	114	14

## Sensorex Probes for Tekna TPR

Model #	Description
S272CD-ORP/10/BC	ORP Sensor, 3/4" NPT, 10' Cable w/ BNC
S272CD/10/BNC	pH Sensor, 3/4" NPT, 10' Cable w/ BNC
SENSOREX-T3/4	3/4" Tee for S272 Probes



Quantrol Inc. 9001 Hanslik Court, Naperville, IL 60564  
Phone: (630) 355-3330 Email: info@quantrol.net Web: www.quantrol.net





# Kompact AML Series

## SEKO Tekna Series

- Manually adjustable flow rate from 0 (pump stop) to 100% of the maximum flow rate.
- Turndown ratio 100:1 using the manual stroke rate control.
- Easy to install with included wall-mount bracket. Surface mount bracket also available.
- Wet end constructed of PVDF Head, PVDF Fittings, Ceramic Balls, FPM Seats and a long life, 1 piece, molded PTFE diaphragm.
- Pump head incorporates an integral manual priming valve.
- Installation kit included with Foot Valve/Strainer, Injection/Back Pressure Valve, 3/8" PVC Suction and Polyethylene Discharge tubing.
- Liquid End, User Interface and Wiring are all on the same end of the pump to simplify installation, operation, and maintenance.
- IP65 rated polypropylene enclosure.
- Auto ranging power supply. 100-240VAC, 50/60Hz.
- Dry contact low level input with alarm LED.



Model #	SPM (Max)	GPH	GPD	PSI	GPH	GPD	PSI
AML200NPE0U00U	160	0.8	19	145	1.3	31	120
EM99106823	Optional Surface Mount Bracket						



# Spring MS1

Mechanical Diaphragm Metering Pumps

The SEKO MS1 Series motor driven mechanical diaphragm metering pumps offer high volume at an affordable price point. The MS1 Series achieves flow rates up to 110 gph with a pressure rating as high as 116 psi.

Each model can be adjusted manually between 0-100% of the total flow rate.

Liquid end materials include a PVC Head, PVC Valves, Ceramic ball checks and PTFE diaphragm.

Spring Series pumps include a 115Volt, 56C frame 1/2HP, 1 phase motor.

Maintenance Kit includes replacement head, valves and diaphragm.



Model #	Strokes Per Minute	Flow Rate (GPH)	Pressure (PSI)	NPT Connections	Maintenance Kit Part #
MS1 B108 C31I40U0	78	27	116	3/8"	MS1TC10851
MS1 C138 B31I40U0	78	75	80	3/4"	MS1TC13851
MS1 C165 C31I40U0	78	110	55	1.0"	MS1TC16551



# seko

## Elektra Series

SEKO brings connectivity  
to mechanical dosing



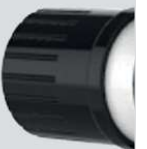
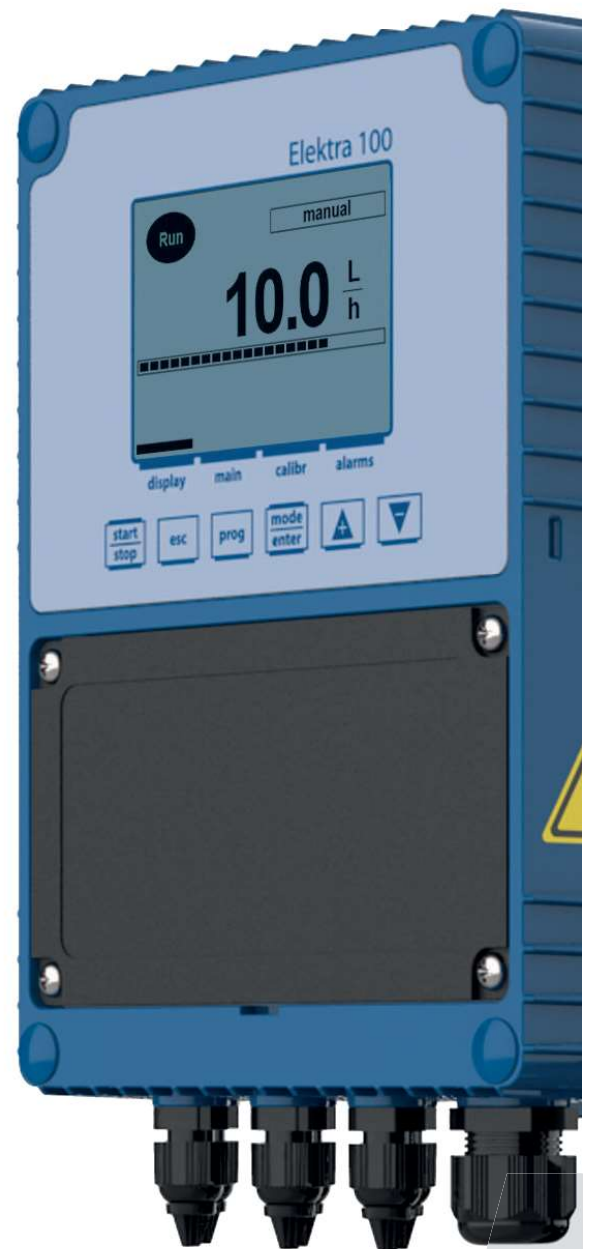
Your Choice,  
Our Commitment

# SEKO brings connectivity to mechanical dosing

SEKO's latest product development sees the modern benefits of remote connectivity to help manage complex operations to mechanical dosing pumps

Elektra builds on the SEKO Spring range of motor driven pumps which have long been recognised for their affordability, low total cost of operation and ease of maintenance.

To this mix of characteristics Elektra brings the ultimate in precision digital dosing and remote data management further enhancing operational cost advantages through ease of programming from any smart device or pc as well as traditional display.





## Key Features

**Data on Demand** offers remote data management and programming from built in hot spot, unique to Elektra

**Real time and historic data** available directly to any smart device or pc including alarms to help drive **effective maintenance planning** and rapid technical intervention

Reliability of SEKO's Spring range offers broad range of flow rates, including **high flow rate up to 1000 l/h** at up to 10 bar

**Wide range of applications** - suitable also for higher viscosity product applications

**Digital dosing** for precise dosing

**Multiple operating modes** – timed, batch, manual, proportional from analogue or digital signals

**Intelligent Graphic display** – shows red, yellow or green according to operating function

Electronic control unit interface **can be fixed in multiple positions** to facilitate operation/installation

Outstanding ease of programming coupled with low maintenance costs give **exceptional operating costs**

**Energy efficient** 3 phase motors, wide range of materials available



# Data on Demand

In a world that is increasingly “connected” Elektra brings the benefits of **Data on Demand**, essential to running an efficient operation across potentially complex installations. Designed to manage operating costs of plants and installations that are continuously under cost pressure, Elektra helps **cost control and provides peace of mind** driven the knowledge of having exactly the right dosage being delivered consistently and with guaranteed repeatability.

Elektra has a **built-in web server** located in the system controller. This allows setup and management of the pump via Web browser, locally on a PC, notebook, **tablet or smartphone**. Pumps can be pre-programmed prior to installation and fine-tuned simply and quickly on site. Operators can obtain **real time and historic data** to manage performance, identify and rectify potential issues quickly, even from another office or location. This allows for targeted maintenance routines combined with alerts for rapid technical intervention helping manage overall costs.

## Elektra Portal

**Monitor page** displays overview of the real-time status of the system including pump operating mode, pump status and alarm status.

**General Settings page** allows user to set the following system parameters: Maximum Flow Rate, Language, Flow Rate @ 4mA, Flow Rate @ 20mA, Measure Unit, Alarm Relay and Pause Input.

**Configuration page** selects pump operating mode and sets parameters according to the selected operating mode – manual, mA, V, ppm, Batch and Timed

**Statistics page** provides an overview of the operating system statistics.

**Alarm page** displays the alarms log. Each alarm is registered into the log file with the following information: date, time and alarm type.

**Calibration page** displays the calibration information and allows the user to set the parameters for either manual calibration or to setup and run the automatic calibration.

**Network Settings page** manages ModBus communication settings and also wireless network settings provided by the system.

**System Revision** displays the system firmware revision information and Permission allows the user to set or change the authentication password.







# Product Offerings

Quantrol's Customer Service Department is ready to assist in sales, selection and application. Our normal business hours are 8:30am - 5:00pm CT. You can count on any of our Customer Service Representatives to promptly assist you with pricing, specifications, product availability and troubleshooting.



Advantage Controls manufactures a complete line of equipment for water treatment professionals. Controllers, pumps coupon racks, glycol + bypass feeders and other accessories for cooling tower, closed loop and boiler applications.



Seko is a world renowned manufacturer of chemical metering pumps. Technologies include solenoid and motor driven diaphragm pumps as well as peristaltic pumps.



Stenner Pumps Company is a leading metering pump manufacturer specializing in peristaltic pump technology since 1957.



Cartridge and Bag Housings in a variety of materials including polypropylene, stainless and carbon steel. Cartridge options include String Wound, Melt Blown, Pleated, Resin Bonded, High Purity, Membrane, Carbon and Specialty Resins.



Fail-safe spring or capacitor return actuated ball valves for cooling tower bleed. High temperature/pressure - power open/close ball valves for boiler blow-down applications. Throttling valves and orifice unions.



A complete line of handheld portable testers and inline monitor/controllers for Conductivity, TDS, Resistivity, pH and ORP. Calibration solutions and buffers.



## QUALITY EQUIPMENT FOR THE CONTROL OF WATER TREATMENT

9001 Hanslik Ct. Naperville, IL 60564 | Tel: 630-355-3330 | info@quantrol.net | www.quantrol.com





Lutz-JESCO manufactures drum pumps for fluid transfer as well as solenoid and stepper motor driven metering pumps.



PULSAtron, Chem-Tech, Blackline and Mec-O-Matic Metering Pumps and accessories. Controllers for cooling tower & boiler applications. Complete chemical feed and polymer blending systems.



Chemical process and storage tanks designed for responsible handling of chemicals. Single wall and dual containment tanks designed with the water treatment industry in mind. Metering pump containment shelves. Secondary spill containment systems. Full line of accessories to complete your installation.



Water meters and electronic controls for commercial, industrial and municipal applications. Multi-jet, turbine and oscillating piston PD meters in sizes up to 8.0". Lead-free meters for potable water applications. Engineered plastics for high purity RO and DI water.



EDDINGTON INDUSTRIES

Corporation stops, single & multi-port injection quills, sample coolers, flow controls, coupon racks and glycol feed systems.



Quantrol distributes commercial & industrial filtration equipment from these well known manufacturers.



Handheld and inline instrumentation for PTSA, Fluorescein, Conductivity, pH, ORP, Liquid level and more.



Bromine, bypass and filter feeders along with all the accessories that go with it.



Bypass, bromine and filter feeders. Sample coolers and sludge traps. Centrifugal separators and packaged separator systems. Mixers, tank systems, glycol feed systems.



LG Chem thin film membranes are widely used in water treatment processes as a means of removing contaminants and purifying water from a broad range of sources.

